

The 15th Annual Meeting of Chinese American Pathologists Association



Marriott Rivercenter, Salon E, San Antonio, TX
Saturday, March 4, 2:30 – 4:30 PM, 2017

The Mission of the CAPA



The primary mission of the CAPA is to improve educational opportunities and professional skills of practicing pathologists of Chinese ethnicity, by promoting communication, friendship and cultural exchange, and by advancing the science and practice of pathology and laboratory medicine.

<http://www.capaht.org> & <http://www.capa-ht.org>

CAPA Acknowledges the Following Sponsors for Their Support

Advanced Cell Diagnostics, Inc.

BioGenex

Fidelity

Foundation Medicine

Geisinger IHC Reference Lab

Gopath

Maixin

Motic

NovoDias, Inc.

South East Pathology Association

WebPathLab Inc.

The CAPA Annual Report 2016-2017

Dear CAPA members and friends:

It is my great honor and privilege to have served as the CAPA president 2016-2017. Thanks to your strong support, dedication, and contributions, we have achieved many milestones in CAPA history in the past year.



Our membership has continued to grow at a rapid pace. To ensure that the election is open and fair, we have amended CAPA bylaws and implemented several new procedures for the 2017 CAPA election including an open call for qualified candidates, the creation of a list of qualified voters, and an official voting procedure, etc. The 2017 CAPA election was a great success and laid the foundation for future CAPA elections. The voter participation was outstanding with a voting rate of 84% in this election. Our members celebrated the election of president-elect, Dr. Yun Gong and four new executive committee members with joy.

CAPA is recognized internationally as an excellent pathology organization. In the past year, CAPA has successfully organized or co-organized several national and international meetings/courses, including the First CAPA Companion Meeting at 2016 CAP Annual Meeting in Las Vegas, the Second CAPA Diagnostic Pathology Course in Houston, the Second CAPA-Beijing Pathology Symposium in Beijing, and the Third China-US Pathology Symposium in San Antonio. For the first time, CAPA has been officially listed in the meeting program of the 10th Congress of Asia Pacific International Academy of Pathology (APIAP) and will organize three sections at this important international meeting, which will be held in Bali, Indonesia in April 2017. In addition, CAPA sponsored the First Hematopathology Case Presentation Conference in Seattle and has organized expert pathologists to present at the 2016 Chinese Society of Pathology (CSP) annual meeting in Hefei. CAPA is invited with CAP and ASCO as one of the non-financial sponsors for the Cancer Biomarkers Conference II (CBCII) at the Houston Methodist Research Institute in September 2016. These events highlight the great success of CAPA's educational initiatives.

To foster the collaborations with international pathology associations, we have created a new award, the CAPA President's Award, for pathologists who promote CAPA at the international level and make major contributions to CAPA. To better serve our members, CAPA has established three new subspecialty subcommittees in the past year, including hematopathology, cytopathology and dermatopathology subcommittees. To better serve the increasing needs of the CAPA community, we have created a new CAPA website (capa-ht.org). In addition, CAPA has started to sponsor webinars to our trainees and members, which have been very well attended and received by our members.

CAPA continues to attract more sponsors to make CAPA more financially stable and healthier than before. We have established strategic relationships with many sponsors for our educational events and annual meeting.

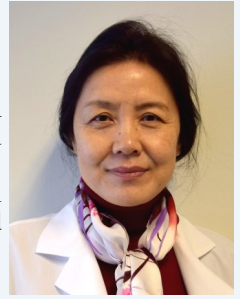
In summary, CAPA is well-prepared and positioned for future growth. I want to thank the CAPA Executive Committee, subcommittees, all the dedicated members and volunteers who worked closely with me to accomplish these ambitious goals. We are very fortunate to have Dr. Ping Tang leading our organization for the next term. Together, we will make CAPA a stronger and better organization.

Huamin Wang, MD, PhD
CAPA President, 2016-2017
Professor

University of Texas M.D. Anderson Cancer Center

*D*ear CAPA Members:

It is my great honor and privilege to serve you as the CAPA president for 2017-2018. Since its establishment in 2003, and with continuous and collective efforts from our presidents, officers of all subcommittees, and all active members, CAPA has become a national and internationally recognized pathologist organization with about 725 members today.



CAPA consists of a very broad membership in both academic and private practice; in both AP and CP; with experienced and "young" pathologists. As a group, we are extremely accomplished, with many nationally and internationally known pathologists and tenured professors in major medical centers. We have had members serve as department chairs and directors for anatomic pathology in top US/Canadian universities, directors for residency and fellowship programs across the country, and directors/business owners in various settings of private practices.

The #1 mission of CAPA is to serve our members. As we move forward, I will work with the president-elect Dr. Yun Gong, current and newly elected EC members, all subcommittees, and all members towards the following goals:

Education

- 1) To continue the existing CAPA programs including the third CAPA diagnostic Pathology Course (Chicago, Aug 19-20, 2017); the third CAPA-Beijing Pathology Symposium (Beijing, Sep 2-3, 2017); the second CAPA Companion Meeting at 2017 CAP (National Harbor, Oct 7-11, 2017); the CAPA companion meeting at Chinese Pathology Society Annual Meeting (Suzhou, Oct 26-29, 2017).
- 2) To create new programs including the first CAPA Pathology Symposium in China (Dali, Oct 30, 31, 2017); and the first CAPA Companion Meeting at 2018 USCAP (Vancouver, March 2018); and online educational courses both in US and China.

Publication

- 1) To improve our website and create a member-only area where we can share our interesting cases, great photos, travel tips, cooking recipes, and more.
- 2) To continue our quarterly newsletters with news from our members, reports from each subcommittee, interesting cases, great photos, best recipes, etc.

Other Missions

- 1) To re-organize CAPA subcommittees with special mentoring subcommittee for our junior members and chapters for each subspecialty.
- 2) To work with national and international pathology societies, including subspecialty pathology societies, and promote bigger roles of our members in these societies.
- 3) To continue grow with new members and more sponsorships.

Together, anything is possible. Let's get to work.

Ping Tang, MD, PhD
CAPA President 2017-2018
Professor and Director of Breast Pathology
University of Rochester Medical Center, Rochester, NY

The 15th CAPA Annual Business Meeting

Marriott Rivercenter, Salon E, San Antonio, Texas

2:30 – 4:30 PM, Saturday, March 4, 2017

1:30 – 2:30 PM | Registration

2:30 – 3:00 PM | CAPA Business Meeting

Opening remarks and CAPA Annual Report: Dr. Huamin Wang, CAPA President, 2016-2017

CAPA Finance Report: Dr. Eric Chen, CAPA Treasurer

CAPA Membership Update: Dr. Lizhen Gui, Chair of Membership Subcommittee

Announcement of 2017 Election Results: Dr. Huamin Wang

3:00 – 3:15 PM | Remarks from CAP, USCAP and CSP Officials

Dr. Richard Friedberg, CAP President

Dr. Paul Lewin, Director of International Development, USCAP

Dr. Xiu-Wu Bian, CSP President

3:15 – 3:30 PM | Scientific Presentations by Meeting Platinum Sponsors

Advanced Cell Diagnostics, Inc.

NovoDiax

Maixin Biotech. Co., Ltd.

3:30 – 4:15 PM | Presenting CAPA Awards

CAPA Honorary Award: Presented by Dr. Huamin Wang

CAPA/ACD Distinguished Pathologist Awards: Presented by Drs. Yuling Lou (ACD CEO) and Huamin Wang

CAPA President's Award: Presented by Dr. Huamin Wang

CAPA/Zu-Hua Gao Service Award: Presented by Dr. Huamin Wang

CAPA Member of the Year Award: Presented by Dr. Huamin Wang

CAPA/Gopath Best Abstract Awards: Presented by Drs. Hanlin Wang and Zhenbin Lu

CAPA/Motic Best Abstract Awards: Presented by Dr. Guoping Cai and Mr. Richard Yeung, Motic CEO

4:15 – 4:30 PM | Looking Forward

Dr. Ping Tang, CAPA President 2017-2018

4:30 – 5:30 PM | Bus or Taxi to China Harbor Restaurant

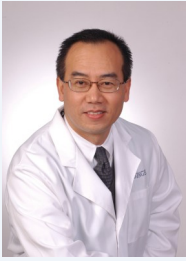
17333 San Pedro Ave, San Antonio, TX 78232; Tel: (210) 494-6688

Free Buses (Motor Coaches) available at 4:30 PM at Marriott Rivercenter

5:30 – 11:00 PM | CAPA Annual Dinner Party and Karaoke

CAPA Awards

2017 CAPA Honorary Award



Dr. Fan Lin is the deputy editor-in-chief of the Archives of Pathology & Laboratory Medicine, Director of Anatomic Pathology at Geisinger Health System. He received his M.D. from Fujian Medical University and Ph.D. in Biological Sciences from the University of North Texas. He completed AP/CP residency training at the University of Chicago Hospital in 1999, followed by one year of Cytopathology fellowship training at MD Anderson Cancer Center. He has authored over 80 articles in peer-reviewed pathology journals, over 20 book chapters, and presented over 175 posters/platform presentations at pathology society meetings. He leads the Geisinger Anatomic Pathology group in

making contribution to the field of immunohistochemistry, including publishing "Handbook of Practical Immunohistochemistry – Frequently Asked Question, 2nd edition" and its free companion IHC website (www.ihcfq.com), and contributing 2 special issues on IHC updates to the Archives of Pathology and Laboratory Medicine in 2014 and 2015. Dr. Lin is a reviewer for many pathology journals. Dr. Lin has been a member of CAPA since the establishment and former president of CAPA (2015-2016). Under the leadership of Dr. Lin, CAPA achieved many major mile stones: organized the first CAPA Diagnostic Pathology Course in New York City; edited a special issue of review articles to highlight the lectures presented at the First CAPA Diagnostic Pathology Course in NYC in *Archives of Pathology and Laboratory Medicine*; co-organized the first CAPA-Beijing Diagnostic Pathology Course in Beijing; published the quarterly CAPA eNews-letters; initiated the first CAPA Companion Meeting at the 2016 CAP meeting; recruited many more members, including many lifetime members; attracted more sponsors to make CAPA more financially stable and healthier than ever; created two new CAPA awards - CAPA Honorary Award and CAPA Member of the Year Award etc. We thank Dr. Lin for his outstanding leadership, dedication and contributions to CAPA.

2017 CAPA President's Award

Dr. Xiu-wu Bian is a professor and the director of the Institute of Pathology and Southwest Cancer Center, Southwest Hospital, Third Military Medical University. He is the President of Chinese Society of Pathology (CSP)(2013-2016), the vice Chairman of Chinese Association of Pathologists (CAP) (2013-2017) and the President-elect of Tumor Metastasis Research Committee of Chinese Anti-cancer Association (CACA)(2015-2018). Dr. Bian is the Leading Scientist of "Ten-thousand Talents" Program of China and the "Changjiang Scholar" of Education Ministry of China. His research interest is the interaction of cancer stem cells with tumor microenvironment. His "cancer stem cell research team" is a National Innovation Team. He is the Chief Scientist of National Basic Research Program (973) in cancer stem cells. As corresponding author, he has published 86 peer-reviewed papers in international English journals including *Cell Stem Cell*, *PNAS*, *JNCI*, *Nat Commun*, *Cancer Res*, *Hepatology*, *J Pathol*, etc. He was awarded as the first accomplisher for the first prize of National Science and Technology Progress Award of China, the first prize of Chinese Medical Association Award, and the first prize of Science and Technology Award from CACA. In 2015, he was honored with "Distinguished Pathologist Award" by American Society of Clinical Pathology (ASCP) and Chinese American Pathologists Association (CAPA). As the director, Dr. Bian organized and provided financial support for the 1st, 2nd and 3rd China-CAPA Pathology Forums in conjunction with the USCAP Annual Meetings in the last three years. These meetings were very well attended by the leading pathologists from China and the pathologists from CAPA. In addition, Dr. Bian has also invited many CAPA speakers to the CSP annual meeting in China in the last three years. Through these platforms, Dr. Bian has made outstanding contributions to CAPA and promoted the communications and collaborations between CAPA and the pathology community in China.



CAPA Awards (Continued)

2017 CAPA President's Award (Continued)



Dr. Ning Lu graduated from the Beijing Medical College (currently Medical College of Beijing University) in 1982. She is a professor and the chairman of the Department of Pathology National Cancer Center (NCC)/Cancer Hospital, Peking Union Medical College (PUMC), Chinese Academy of Medical Sciences (CAMS), Beijing, China. Dr. Lu is also the deputy director of the Department of Pathology, PUMC, the vice chairman of the Beijing Branch of the Pathology, Chinese Medical Association, the vice chairman of the Tumor Pathology, Chinese Anti-Cancer Association, Trustee of the Beijing Association of Pathologist and members of the Pathological branch of Chinese Medical Association and the Chinese Association of Pathologist. Dr. Lu is a well-known pathologist in China specialized in neoplastic pathology and molecular pathology. Dr. Lu successfully organized and served as the directors of the First and Second joint CAPA-Beijing Pathology Summits in Beijing and partially sponsored many CAPA speakers to these meetings in 2015 and 2016. Both meetings included many expert pathologists from China as speakers and provided a unique platform to promote the communications and collaborations between CAPA and the pathology community in China. Dr. Lu is currently planning for the 3rd CAPA-Beijing Pathology Summit with CAPA, which will be held in Beijing in the summer of 2017.

2017 CAPA ACD Distinguished Pathologist Award

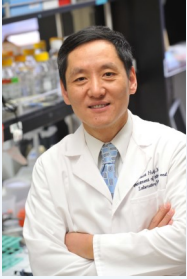
Dr. Qihui “Jim” Zhai is a professor of pathology, consultant pathologist and director of FISH Laboratory in Mayo Clinic Florida. He completed his pathology residency at Mayo Clinic Rochester (2002) followed by an oncologic pathology fellowship at MD Anderson Cancer Center (2002-2003). He joined Baylor College of Medicine as assistant professor (2003), then Houston Methodist Hospital/Cornell University as associate professor (2004-2009), and was recruited to University of Cincinnati as professor (2009).



He climbed the academic ladder from assistant to full professor within six short years. Dr. Zhai is a well-sought-after international speaker in head and neck and urological pathology. He is a competent diagnostician and his expertise and interests in translational research contributed significantly to the pathology literature. He published about 100 peer-reviewed original manuscripts, several hundred abstracts, and authored/co-authored seven popular pathology textbooks. He is on the editorial board of several reputable pathology journals and Editor-in-Chief of *International Journal of Clinical and Experimental Pathology*. Dr. Zhai has been actively involved with state and national pathology societies, including USCAP Education Committee, CAP Nomination Committee, Publication Committee, and Surgical Pathology/Immunohistochemistry Committee. He was President Elect of Houston Society of Clinical Pathologists, and currently is Vice President and Chair of the Education Committee of Florida Society of Pathologists. He spent a tremendous amount of time promoting Sino-America pathology education, research and practice. In the year of 2014-2015, he served as CAPA president, and he made outstanding contributions to our own community by setting numerous milestones in CAPA history.

CAPA Awards (Continued)

2017 CAPA ACD Distinguished Pathologist Award (Continued)



Dr. Jiaoti Huang is Professor and Chairman of the Department of Pathology at Duke University. He earned his medical degree from Anhui Medical University, Master degree from the Institute of Radiation Medicine in Beijing and his PhD from New York University School of Medicine. Dr. Huang was a Leukemia Society of America Postdoctoral Fellow at NYU and Yale University. He did residency training in pathology at NYU School of Medicine and a fellowship in Oncologic Surgical Pathology at Memorial Sloan-Kettering Cancer Center. He became an assistant professor at the University of Rochester in July 2000 and rose to the rank of full professor in 2007. Dr. Huang moved to UCLA in 2008 and came to Duke at the beginning of 2016. Dr. Huang's clinical expertise is in the pathologic diagnosis of genitourinary tumors. His research focuses on the molecular mechanisms, biomarkers and novel therapies for advanced prostate cancer. Dr. Huang's laboratory is a leader in studying neuroendocrine differentiation of prostate cancer and molecular pathogenesis of prostatic small cell neuroendocrine carcinoma. Dr. Huang has published 200 research papers, review articles and book chapters. He has been continuously supported by grants from NIH, American Cancer Society, Department of Defense, Prostate Cancer Foundation, and Stand Up to Cancer.

2017 CAPA/Zu-Hua Gao Service Award



Dr. Lizhen Gui is a staff pathologist at Northwest Arkansas Pathology Associates. Dr. Gui initiated the Duotou Microscope WeChat group in 2014. Since then, she has successfully managed the Duotou WeChat group which now has 567 active members and serves as a popular online community for Chinese pathologists in North America. Dr. Gui served as a member of the CAPA Executive Committee and chaired the CAPA Membership Committee for the past two years. In the last three years, she has made major contributions to CAPA in recruiting new members, managing membership database, being in charge of the registrations of our annual meetings, the 1st and 2nd CAPA pathology courses, organizing CAPA annual dinners and the dinners during both pathology courses, etc. We thank Dr. Gui for her outstanding dedications to CAPA!

CAPA Awards (Continued)

2017 CAPA Member of the Year Award



Fan Chen, MD, PhD
Chair of CAPA Publication and Website Committee

Dr. Fan is in charge of CAPA eNewsletters and the brochures of CAPA annual meetings.

She also involved in the maintenance of CAPA website in the last two years

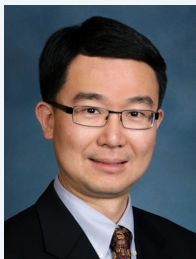


Zongming (Eric) Chen, MD, PhD

CAPA Treasurer for 2015-2018

Dr. Chen is in charge of all CAPA financial activities, including membership and registration payments, in the past two years.

He has played a critical role in the planning of all CAPA activities since 2015



Jie Song, M.D., M.S., M.C.S.

Chair of the CAPA Publication and Website Committee

Dr. Song is in charge of maintaining and updating CAPA website in the last two years.

He has created a new CAPA website in 2016 and is the IT expert who did an outstanding job in supporting 2017 CAPA election



Xiaoping Sun, M.D., Ph.D.

Dr. Sun devoted his time and effort taking

photos and making videos for CAPA. He initiated soliciting financial support for CAPA Houston/Galveston Chapter six years ago, which has led to the Chapter's regular and popular annual gathering since then. He also obtained financial support for the 2nd CAPA Pathology Course in Houston and the Annual CAPA Meeting in San Antonio.

He Wang, M.D., Ph.D.

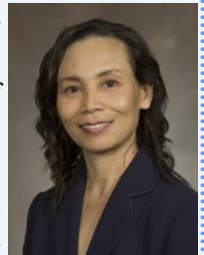
Dr. Wang was one of the organizing committee and faculty members who were in charge of CME for the 2nd CAPA pathology courses in Houston.



Bihong Zhao, M.D., Ph.D.

Dr. Zhao was one of the organizing committee members who were in charge of the Karaoke party for the 2nd CAPA pathology

courses in Houston. She is one of leaders who are planning for the CAPA annual dinner and Karaoke party this year.

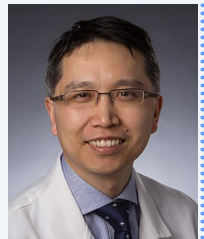


Lanjing Zhang, MD, MS

Co-chair for CAPA

Education Subcommittee 2015-2017

Dr. Zhang is one of the leaders who organized the First CAPA companion meeting in conjunction of CAP'2016 and the 2nd China- US Pathology Symposium. He has also played an important role in many other CAPA activities.



CAPA Awards (Continued)

2017 CAPA GoPath Best Abstract Award

First Prize:

Kevin Yi Mi Ren, MD, Queen's University at Kingston, Ontario, Canada. Analysis of Ezrin and Phospho-ezrin (Active) as Biomarkers of Invasion and Metastasis in Breast Cancer

Second Prize:

Yimin Dong, MD, PhD, University of Arizona, Brushing Cytology with Adjunctive FISH and Biomarker Analyses Is Highly Sensitive and Specific in the Early Detection of Low-grade Dysplasia in Barrett's Esophagus

Yanchun Li, MD, PhD, Roswell Park Cancer Institute, PDL-1 (Clone 22C) Stromal Expression Predicts Better Overall Survival in HER2+ Breast Carcinoma

Third Prize:

Jian He, MD, PhD, University of Texas MD Anderson Cancer Center, Novel Herceptin-Based IHC Test Detects HER2+ Breast Cancers Correlating to Responses to HER2-Targeted Therapy

Tong Sun, MD, PhD, University of Massachusetts, A Comparative Study on the Diagnostic Value of Next Generation Sequencing in Urine Cytology and Bladder Tumor Specimens

Wei Zhang, MD, PhD, Mount Sinai Health System, APC and KRAS Genetic Variants Associated with Colorectal Cancer Histology Grade and Tumor Staging

2017 CAPA Motic Best Abstract Award

First Place Prize

The Extensive Heterogeneity between Primary and Metastatic Colorectal Carcinoma Detected by Next Generation Sequencing

Shuang-Mei Zou, Wen-Miao Wang, Wen-Bin Li, Bo Zheng, Jian-Ming Ying, Ning Lu

Peking Union Medical College, Cancer Hospital, Chinese Academy of Medical Sciences, Beijing, China

Second Place Prize

Experience and Analysis of 2087 Frozen Section Diagnoses Using Digital Telepathology

Jing Li, Xiangdong Ding, Wei Liu, Tao Wu, Xi Lin, Zhengpeng Ha, Pifu Luo

Department of Pathology, King Med Diagnostics, Guangzhou, China

CAPA Awards (Continued)

2017 CAPA Motic Best Abstract Award (Continued)

Second Place Prize (Continued)

Value of Cytopathologic Diagnosis in Endobronchial Ultrasound-Guided Transbronchial Needle Aspiration and Endoscopic Ultrasound-guided Fine Needle Aspiration

Wenhao Ren, Jian Cao

Department of Pathology and Resident Training Base, Cancer Hospital, Peking Union Medical College and Chinese Academy of Medical Sciences, Beijing, China

Third Place Prize

Anaplastic Variant of Diffuse Large B-cell Lymphoma Displays Intricate Genetic Alterations and Distinct Biological Features

Mingyang Li¹, Yixiong Liu¹, Yingmei Wang¹, Gang Chen², Qiongrong Chen³, Hualiang Xiao⁴, Fang Liu⁵, Chubo Qi³, Zhou Yu¹, Xia Li¹, Linni Fan¹, Ying Guo¹, Qingguo Yan¹, Shuangping Guo¹, Zhe Wang¹

¹Department of Pathology, Xijing Hospital, Fourth Military Medical University, Xi'an, China

²Department of Pathology, Fujian Cancer Hospital, Fuzhou, China

³Department of Pathology, Hubei Cancer Hospital, Wuhan, China

⁴Department of Pathology, Daping Hospital, Third Military Medical University, Chongqing, China

⁵Department of Pathology, First People's Hospital of Foshan, Foshan, China

Cytopathological Diagnosis of Hematolymphoid Neoplasms in Serosal Effusion: An Algorithmic Approach Combining Morphology, Immunophenotyping and Genomics

Lan Chen¹, Dong-Ge Liu¹, Jin-Song Zhang¹, Di Cui¹, Zhi-Lan Meng²

¹Department of Pathology, Beijing Hospital, National Centre of Gerontology, Beijing, China

²Department of Pathology, Peking Union Medical College Hospital, Chinese Academy of Medical Science, Beijing, China

Tumor-Associated Macrophages Secrete Pleiotrophin to Promote PTPRZ1 Signaling in Glioma Stem Cells and Support Tumor Growth

Yu Shi¹, Yifang Ping¹, Shideng Bao², Xiu-Wu Bian¹

¹Institute of Pathology and Southwest Cancer Centre, Southwest Hospital, The Third Military Medical University, Chongqing, China

²Department of Stem Cell Biology and Regenerative Medicine, Lerner Research Institute, Cleveland Clinic, Cleveland, USA

2017 CAPA Election

On behalf of the CAPA Election Committee, we would like to congratulate the following winners of the 2017 CAPA election.

President-elect, 2018-2019



Yun Gong, M.D.

CAPA Executive Committee members who will serve from 2017 to 2019 (in alphabetic order)



Lirong Cheng, M.D.



Yong "Andy" Ke, M.D., Ph.D.



Wei Xin, M.D., Ph.D.



Linsheng Zhang, M.D., Ph.D.

CAPA Treasurer, 2018-2021 (Elected by CAPA EC Members)



Huihong Xu, M.D.

Special thanks to Drs. Charles Chuanhai Guo, Feng Li, Dongfeng Tan, Jack Yang for their participation in this election and for their willingness to serve and contribute to CAPA community.

This is a historic CAPA election with an outstanding participation rate of 84%. In this election, we have implemented several key measures to make sure an open, fair, democratic election based on the CAPA bylaws, including open call for candidates, creation of a list of qualified voters, and an official election procedure. We would also like to express our special thanks to Dr. Lizhen Gui and Dr. Jie Song (the IT expert) who had done an outstanding job and had contributed numerous hours to this election. Thank you all for your strong support.

CAPA Executive Committee

Huamin Wang (President 2016-2017)

Ping Tang (President-elect 2017-2018)

Fan Lin (President 2015-2016)

Zongming (Eric) Chen (Treasurer)

Marilyn Bui

Guoping Cai

Lizhen Gui

Chen Liu

Huan-You Wang

Lanjing Zhang

Jun Zhang

CAPA Past Presidents

Chin-Lee Wu (2002-2005)

Ximing Yang (2006)

Bin Yang (2007)

Shu-Yuan Xiao (2008)

Shuan Li (2009)

Ming Zhou (2010)

Steven Shen (2011)

Zu-Hua Gao (2012)

Jinsong Liu (2013)

Qihui (Jim) Zhai (2014)

Fan Lin (2015)

CAPA Senior Advisory Council (SAC) (Alphabetical Order)

Longwen Chen, MD, PhD

Mayo Clinic Arizona

Fang Fan, MD, PhD

University of Kansas Medical Center

Zu-hua Gao, MD, PhD, FRCP

McGill University Health Center

Yun Gong, MD

UT MD Anderson Cancer Center

Jiaoti Huang, MD, PhD

UCLA

Qin Huang, MD, PhD

Harvard Medical School, VA Boston Healthcare System

Pei Hui, MD, PhD

Yale University School of Medicine

Maomi Li, MD, PhD

Integrated Oncology (LabCorp Specialty Testing Group)

Shuan C. Li, MD

Orlando Health

Fan Lin, MD, PhD

Geisinger Medical Center

Jinsong Liu, MD, PhD

UT MD Anderson Cancer Center

Wendy Liu, MD, PhD

University Hospitals Case Medical Center

Danielle Lu, MD

Huntington Memorial Hospital, Pasadena, CA

Steven Shen, MD, PhD

Houston Methodist Hospital Weill Medical College of Cornell University

Ping Tang, MD, PhD

University of Rochester Medical Center

Beverly Wang, MD

UC Irvine Medical Center

Hanlin Wang, MD, PhD

UCLA

Jun Wang, M.D.

Loma Linda University Medical Center

Chin-Lee Wu, MD, PhD

Massachusetts General Hospital; Harvard Medical School

Shu-Yuan Xiao, M.D.

University of Chicago

Wei Xin, MD, PhD

University Hospital Cleveland Medical center

Haodong Xu, MD, PhD

UCLA

Bin Yang, MD, PhD

Cleveland Clinic

Ximing J. Yang, MD, PhD

Northwestern University

Qihui (Jim) Zhai, MD

Mayo Clinic

Lanjing Zhang, MD, MS

University Medical Center of Princeton at Plainsboro; Rutgers University

Jun Zhang, MD

Mayo Clinic

Paul J. Zhang, MD

Hospital of the University of Pennsylvania, Perelman School of Medicine

Chengquan Zhao, MD

Magee-Womens Hospital University of Pittsburgh

Wenxin Zheng, MD

University of Arizona College of Medicine

Chen Zhou, MD, PhD

University of British Columbia, Vancouver, Canada

Ming Zhou, MD, PhD

New York University Medical Center, Tisch Hospital

Youli Zu, MD, PhD

Houston Methodist Hospital, Weill Medical College of Cornell University

CAPA Publication Subcommittee/Editing Team

Huan-You Wang

Jun Zhang

Fan Chen

Jie Song

Zenggang Pan

Kar-Ming Fung

Longwen Chen

Yajue Huang

Huimiao Jiang

Jie Song

Design for Brochure

Fan Chen (2016-2017)

Huihui Ye (2015)

Zenggang Pan (2015)

Website Master

Jie Song

(2015-2017)

Design for eNewsletter

Fan Chen

(2015-2017)

CAPA Lifetime Members (Alphabetical Order)

Bai, Shuting	Jiang, Ming	Pei, Zhiheng	Xu, Xiaomeng
Bu, Lihong	Jiang, Yujing	Piao, Yingchao	Xu, Xiaowei
Bui, Marilyn	Jing, Ni	Pu, Robert	Yang, Bin
Bunting, Silvia	Jing, Xin	Qian, Fang	Yang, Hongyu
Cagle, Philip	Kong, Max	Qian, Xiaohua	Yang, Ximing
Cai, Jianping	Lee, Peng	Shen, Steven	Yao, Xu
Chen, Ahchean	Li, Feng	Shen, Youjun	Ye, Huihui
Chen, Baorong	Li, Hong	Sun, Wei	Yin, Hong (Julie)
Chen, Fayu (Mark)	Li, Hongmei	Su, Mu	Yin, Hong
Chen, Fan	Li, Lin	Tan, Dongfeng	Yu, Hongbo
Chen, Guilan	Li, Long	Tang, Daniel	Yu, Limin
Chen, Helen	Li, Shuan	Tang, Ping	Zhang, David
Chen, Longwen	Li, Yanhua	Tang, Wozhan	Zhang, Jun
Chen, Ning	Liang, Mei	Tian, Wei	Zhang, Lanjing
Chen, Qianghua	Liang, Songlin	Wang, Beverly	Zhang, Songlin
Chen, Yayan	Lin, Fan	Wang, Hanlin	Zhang, Yaxia
Cheng, Hong	Lin, Jingmei	Wang, He	Zhang, Xiaohong
Cheng, Liang	Lin (Gellert), Lan	Wang, Lan	Zhang, Zesong
Cheng, Lirong	Liu, Fang	Wang, Larry	Zhao, Bihong
Cui, Chunhua	Liu, Haiyan	Wang, Li Juan	Zhao, Chengquan
Fan, Fang	Liu, James	Wang, Min	Zhao, Huicong
Fan, Rong	Liu, Jiafan	Wang Yan	Zhao, Qing
Fan, Xuemo	Liu, Mark	Wen, Fang	Zhao, Song
Feng, Wei	(Yingxian)	Wu, Chin-Lee	Zhao, Xiangrong
Fu, Liying	Liu, Shaojun	Wu, Sang Ling	Zhao, Xiaohui
Gao John	Liu, Wendy	Wu, Susan	Zheng, Su
Gong, Yun	Liu, Wenhua	Xia, Ling	Zheng, Wenxin
Gui, Lizhen	Liu, Xiuli	Xiao, Shuyuan	Zhou, Chen
Huang, Jiaoti	Luo, Frank	Xin, Wei	Zhou, Jiehao
Huang, Qin	Ma, Xiaoling	Xu, Bo	Zhou, Zhongren
Huang, Ruoqing	Ma, Zhiwei	Xu, Chenny	Zhu, Lee ching
Hu, Huankai	Mo, Jun	Xu, Huihong	Zu, Youli
Ji, Peng	Ni, Kai	Xu, Ruliang	



The First CAPA Diagnostic Pathology Course at Flushing, New York in 2015

Photographed by Dr. Xiaoping Sun



Digital Scanner and Telepathology Platform
Automated Cervical Cancer Screening
Cancer DNA Ploidy Analysis
Cytology and Surgical Pathology Services

麦克奥迪(厦门)医疗诊断系统有限公司
MOTIC XIAMEN MEDICAL DIAGNOSTIC SYSTEMS CO. LTD

厦门麦克奥迪医学检验所
XIAMEN MOTIC MEDICAL LABORATORY

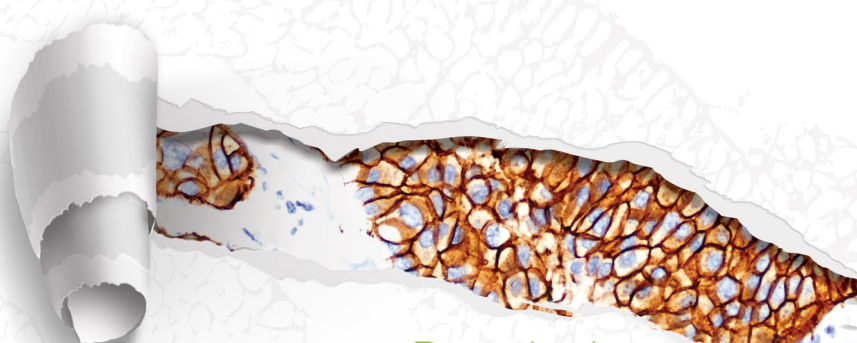


Motic Medical Diagnostic
Systems, Xiamen, China
med.motic.com



MXB[®]
Biotechnologies

Maixin provides comprehensive range of solutions for immunohistochemistry



Biotechnologies

福州迈新生物技术开发有限公司

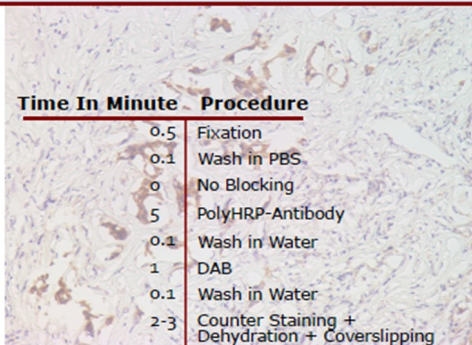
☎ : 400-8889-853/800-8581-156



10 MINUTE INTRAOPERATIVE DIRECT IHC

Available Products:

- ihcDirect AE1/AE3
- ihcDirect Mart-1
- ihcDirect CK8/18
- ihcDirect Synaptophysin
- ihcDirect Herceptin



Time In Minute	Procedure
0.5	Fixation
0.1	Wash in PBS
0	No Blocking
5	PolyHRP-Antibody
0.1	Wash in Water
1	DAB
0.1	Wash in Water
2-3	Counter Staining + Dehydration + Coverslipping

9-10

Total Time



NOVODIAX

VISIT

www.novodiox.com

CALL

1.888.439.2716

EMAIL

novoinfo@novodiox.com



SEPA[®]
Labs

SOUTHEASTERN PATHOLOGY ASSOCIATES

SOUTHEASTERN PATHOLOGY ASSOCIATES



Faded SEPA Labs logo.

Rare for you but not for Foundation Medicine

RARE/UNCOMMON SUBTYPE	PERTINENT TUMOR DRIVER	FOA APPROVED TARGETED THERAPIES	FOA APPROVED THERAPIES IN ANOTHER TUMOR TYPE
Non-Serous Ovarian Cancers, eg: Ovarian Clear cell	BRCA1/2	Olaparib	Trastuzumab, Pertuzumab Pazopanib, Ponatinib Temsirolimus, Everolimus Olaparib and others
	ERBB2		
	FGFR1/2/3		
	AKT1/2		
	PALB2		
Pancreatobiliary Cancers: ■ Cholangiocarcinoma ■ Pancreas ■ Gallbladder	IDH1/2	Palbociclib	Azacitidine, Decitabine Trastuzumab, Pertuzumab, Atizumab Pazopanib Dabrafenib, Trametinib, Vemurafenib Everolimus Trastuzumab, Pertuzumab Trastuzumab, Pertuzumab Trametinib Trastuzumab, Pertuzumab
	ERBB2		
	FGFR2		
	BRAF		
	PTEN		
	BRCA2		
	ERBB2		
	BRAF		
	ERBB2		
Uncommon subtypes of breast cancer	CCND1	Palbociclib	Olaparib Afinitin, Coxiximab Erlotinib, Lapatinib, Pertuzumab, Trastuzumab Everolimus, Temsirolimus
	BRCA1/2		
	ESFR		
	ERBB2		
	PIK3R1, NF1, STK11, AKT2/3, PTEN		
Salivary Gland	ERBB2		Trastuzumab, Pertuzumab Coxiximab, Lapatinib Temsirolimus, Everolimus Olaparib Trametinib, Dabrafenib
	ESFR		
	PTEN		
	BRCA1/2		
	BRAF		

Comprehensive genomic profiling using FoundationOne has been performed on > 16,000 uncommon tumor cases. Learn more at: [USCAP Annual Meeting Booth #541](#)

No antibody. No problem.

Breakthrough multiplex RNA
in situ hybridization for any gene
with RNAscope® technology.

Because up to 76% of protein-coding genes have no reliable antibody for immunohistochemistry (IHC), your research often comes to a screeching halt while you wait for a new antibody to be developed. With rapid probe design and universal assay workflows for any gene, RNAscope® technology frees you from the hassles of antibody screening, saving you precious time and effort, while driving publication quality data.

Learn more about RNAscope® Technology
at www.acdbio.com



PD-L1 detection in lung cancer sample using
RNAscope® 2.5 HD Reagent Kit-RED



For Research Use Only. Not for diagnostic use. RNAscope is a registered trademark of Advanced Cell Diagnostics, Inc. in the United States or other countries. All rights reserved. ©2011 Advanced Cell Diagnostics, Inc.

ACD

Advanced Cell Diagnostics



**Second CAPA Diagnostic Pathology Course
University of Texas MD Anderson Cancer Center, Houston Texas, November, 2016**

Photographed by Dr. Xiaoping Sun